



**CUSHMAN &  
WAKEFIELD**

Commercial Kentucky

# AVAILABILITIES REPORT

MAY 2026

RETAIL / LAND AVAILABILITES

Better never settles

# LOUISVILLE AVAILABILITY REPORT

## RETAIL / LAND AVAILABILITES



### RETAIL INVENTORY

#### PROPERTY FOR SALE

216 Highway 160 East  
Henryville, IN 47126

#### AVAILABLE SF / ACREAGE

9,180 SF

#### BUILDING SF

9,180 SF

#### HIGHLIGHTS

2009 constructed building

Functional, open floorplan can support a number of different commercial uses

Lighted pylon sign at the highway

#### BROKERS

Brent Dolen, EP Scherer

[LINK TO FLYER](#) 



### RETAIL INVENTORY

#### PROPERTY FOR LEASE

Springhurst Crossings Shopping Center  
3501-3600 Springhurst Blvd  
Louisville, KY 40241

#### AVAILABLE SF / ACREAGE

14,480 SF

#### BUILDING SF

92,755 SF

#### HIGHLIGHTS

Spaces available from 2,400 sf - 7,200 sf

Exceptional area income demographics

#### BROKERS

Craig Collins, Austin English

[LINK TO FLYER](#) 



### RETAIL INVENTORY

#### PROPERTY FOR SALE

Burks Plaza  
99 Jeannie Drive  
Louisville, KY 40065

#### AVAILABLE SF / ACREAGE

2,125 SF

#### BUILDING SF

26,500 SF

#### HIGHLIGHTS

Front door parking

Shelbyville is experiencing high job growth

Center tenants include WalMart, Dollar Tree, Verizon, and Commonwealth Credit Union

#### BROKERS

Craig Collins, Austin English

[LINK TO FLYER](#) 

# LOUISVILLE

## AVAILABILITY REPORT

### RETAIL / LAND AVAILABILITES



#### RETAIL INVENTORY

##### PROPERTY FOR SUBLEASE

Free-Standing Retail Sublease Opportunity-  
3700 Bardstown Road  
Louisville, KY 40218

##### AVAILABLE SF / ACREAGE

11,945 SF

##### BUILDING SF

11,945 SF

##### HIGHLIGHTS

Free-standing building with drive-thru

Located at the intersections of Hikes Lane, Buechel Bypass and Bardstown Road

Monument signage available

##### BROKERS

Sam Gray, Brent Dolen

[LINK TO FLYER](#) 



#### RETAIL INVENTORY

##### PROPERTY FOR SALE

2200 Dundee Road  
Louisville, KY 40205

##### AVAILABLE SF / ACREAGE

5,396 SF

##### BUILDING SF

5,396 SF

##### HIGHLIGHTS

Well-positioned at Douglass Loop, a historic intersection within the Highlands neighborhood

5,396 square feet within 3 buildings

The building is currently 100% leased

##### BROKERS

Sam Gray, Brent Dolen

[LINK TO FLYER](#) 



#### LAND INVENTORY

##### PROPERTY FOR SALE

10408 Morat Avenue  
Louisville, KY 40223

##### AVAILABLE SF / ACREAGE

11.29 AC

##### HIGHLIGHTS

Prominent location on North Hurstbourne Pkwy

Large land parcel

Growth corridor

##### BROKERS

Brent Dolen, Sam English

[LINK TO FLYER](#) 

# LOUISVILLE

## AVAILABILITY REPORT

### RETAIL / LAND AVAILABILITES



#### LAND INVENTORY

##### PROPERTY FOR SALE

Western Avenue  
Sonora, KY 42776

##### AVAILABLE SF / ACREAGE

2.44 AC

##### HIGHLIGHTS

Site is adjacent to Pilot Service Center

Zoned R-2

2.44-acre site

##### BROKERS

Brent Dolen, Sam English

[LINK TO FLYER](#) 



#### LAND INVENTORY

##### PROPERTY FOR SALE

Medical, Office, Hospitality Land for Sale in Hamburg  
2501 Sir Barton Way  
Lexington, KY 40509

##### AVAILABLE SF / ACREAGE

4.71 AC

##### HIGHLIGHTS

Located in desirable Hamburg submarket

Approved development plans

All utilities available

##### BROKERS

Brent Dolen, Sam Gray

[LINK TO FLYER](#) 



#### LAND INVENTORY

##### PROPERTY FOR SALE

1250 Bardstown Road  
Louisville, KY 40204

##### AVAILABLE SF / ACREAGE

11.15 AC

##### HIGHLIGHTS

RARE opportunity for a mixed-use development in one of Louisville's most desirable neighborhoods

Traffic-light controlled ingress/egress on Bardstown Road

Walkability score of 92/100 - one of the highest in the State of Kentucky

##### BROKERS

Craig Collins, Austin English

[LINK TO FLYER](#) 

# LOUISVILLE

## AVAILABILITY REPORT

### RETAIL / LAND AVAILABILITES



#### LAND INVENTORY

##### PROPERTY FOR SALE

12630 Taylorsville Road  
Louisville, KY 40299

##### AVAILABLE SF / ACREAGE

1.2 AC

##### HIGHLIGHTS

Great retail frontage on Taylorsville Road

Traffic counts in excess of 20,000 daily

Exceptional income and population demographics

##### BROKERS

Craig Collins, Austin English

[LINK TO FLYER](#) 



#### LAND INVENTORY

##### PROPERTY FOR SALE

12908 Shelbyville Road  
(Marketplace Land)  
Louisville, KY 40243

##### AVAILABLE SF / ACREAGE

2 AC

##### HIGHLIGHTS

Prime Shelbyville Road Frontage

Convenient Access to I-265

Versatile 2.33-Acre Parcel

##### BROKERS

Craig Collins, Austin English

[LINK TO FLYER](#) 



#### LAND INVENTORY

##### PROPERTY FOR SALE

Buckner Crossings Land  
Hwy 393 & I-71  
Buckner, KY 40010

##### AVAILABLE SF / ACREAGE

15.83 AC

##### HIGHLIGHTS

Easy access off I-71 via Highway 393

Excellent area demographics

Additional adjacent land available

##### BROKERS

Craig Collins, Austin English

[LINK TO FLYER](#) 

# LOUISVILLE

## AVAILABILITY REPORT

### RETAIL / LAND AVAILABILITES



### LAND INVENTORY

#### PROPERTY FOR SALE

Buckner Crossings Land  
Highway 393 & I-71  
Buckner, KY 40010

#### AVAILABLE SF / ACREAGE

62 AC

#### HIGHLIGHTS

Easy access off I-71 via Highway 393

Excellent area demographics

Additional adjacent land available

#### BROKERS

Craig Collins, Austin English

[LINK TO FLYER](#) 



### RETAIL INVENTORY

#### PROPERTY FOR LEASE

Springhurst Crossing Ground Lease  
Louisville, KY 40241

#### AVAILABLE SF / ACREAGE

0.11 AC

#### HIGHLIGHTS

Located near I-265 & Westport Road

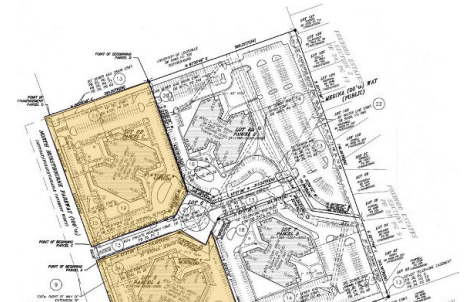
Zoned C1 & C2

On-site Utilities

#### BROKERS

Craig Collins, Austin English

[LINK TO FLYER](#) 



### LAND INVENTORY

#### PROPERTY FOR LEASE

305 North Hurstbourne Parkway  
Louisville, KY 40222

#### AVAILABLE SF / ACREAGE

4.5539 AC

#### HIGHLIGHTS

Prime Location: Situated near Shelbyville Road and North Hurstbourne Parkway

High Visibility: Features over 500 feet of frontage on N. Hurstbourne Parkway with a dedicated traffic light for easy access

Strong Market Demographics: Surrounded by high daytime population, strong income levels, and walkable amenities including retail, hospitality, and dining

#### BROKERS

Craig Collins, Brent Boland

[LINK TO FLYER](#) 

# LOUISVILLE

## AVAILABILITY REPORT

### RETAIL / LAND AVAILABILITES



#### LAND INVENTORY

##### PROPERTY FOR SALE

7508 Cane Run Road  
Louisville, KY 40258

##### AVAILABLE SF / ACREAGE

16 AC

##### HIGHLIGHTS

±16 total acres for sale in Riverport

Zoned M-3

Frontage on Ohio River

##### BROKERS

Jake Mills, Robert Walker

[LINK TO FLYER](#) 



#### LAND INVENTORY

##### PROPERTY FOR LEASE

2910 East Highway 146  
La Grange, KY 40031

##### AVAILABLE SF / ACREAGE

56 AC

##### HIGHLIGHTS

56 acres available

Zoned Industrial

Located in fast growing area

##### BROKERS

Robert Walker, Greg Charmoli

[LINK TO FLYER](#) 



#### LAND INVENTORY

##### PROPERTY FOR SALE

3614 Preston Hwy  
Shepherdsville, KY 40165

##### AVAILABLE SF / ACREAGE

33.22 AC

##### HIGHLIGHTS

Shovel-ready site

Quick access to I-65 via Ohm Drive

16 miles to UPS Worldport

##### BROKERS

Robert Walker, Jake Mills

[LINK TO FLYER](#) 

# LOUISVILLE

## AVAILABILITY REPORT

### RETAIL / LAND AVAILABILITES



#### LAND INVENTORY

##### PROPERTY FOR SALE

Hurstbourne/Fegenbush Land:  
4-12.8 Acres-7300 South Hurstbourne Parkway  
Louisville, KY 40228

##### AVAILABLE SF / ACREAGE

12.8 AC

##### HIGHLIGHTS

4-12.8± acres zoned PEC (may divide)

Full ingress/egress: -right in, right out- and -left in, left out- from Hurstbourne Pkwy

##### BROKERS

Robert Walker, Jake Mills

[LINK TO FLYER](#) 



#### LAND INVENTORY

##### PROPERTY FOR SALE

Rock Springs Farms  
6101 Haunz Lane  
Crestwood, KY 40014

##### AVAILABLE SF / ACREAGE

184 AC

##### HIGHLIGHTS

Property is ripe for new single family, multifamily and senior living development

Located in Oldham County to the immediate east of the Jefferson County line

Surrounded by raw land and single family developments with high-ranging price points

##### BROKERS

Sam English, Brent Dolen

[LINK TO FLYER](#) 



#### LAND INVENTORY

##### PROPERTY FOR SALE

Triton Office Park - Phase 3  
13549 Triton Park Blvd.  
Louisville, KY 40223

##### AVAILABLE SF / ACREAGE

4.85 AC

##### HIGHLIGHTS

Located in Eastpoint Business Park

Zoned PEC

High variety of nearby amenities and businesses

##### BROKERS

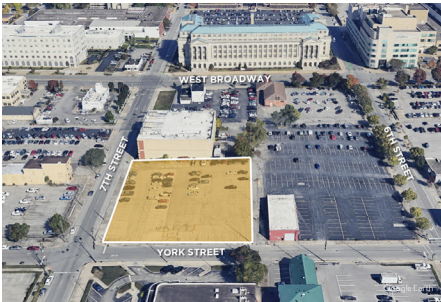
Sam Gray, Brent Dolen

[LINK TO FLYER](#) 

# LOUISVILLE

# AVAILABILITY REPORT

RETAIL / LAND AVAILABILITES



## LAND INVENTORY

### PROPERTY FOR SALE

725-735 South 7th Street  
Louisville, KY 40203

### AVAILABLE SF / ACREAGE

0.99 AC

### HIGHLIGHTS

Excellent visibility

200' x 215' lot dimensions

Level topography

### BROKERS

Sam Gray, Sam English

[LINK TO FLYER](#) 

# RETAIL / LAND INVESTMENT TEAM



## **SAM ENGLISH, CFA**

Executive Managing Director / Office, Retail & Investment Services  
senglish@commercialkentucky.com



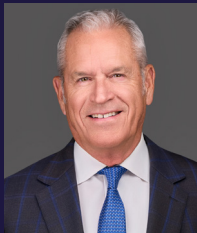
## **BRENT DOLEN, CCIM**

Executive Managing Director / Office, Retail & Investment Services  
bdolen@commercialkentucky.com



## **SAM GRAY**

Director / Office & Retail Services  
samgray@commercialkentucky.com



## **CRAIG COLLINS**

Executive Managing Director / Investment & Retail Services  
ccollins@commercialkentucky.com



## **AUSTIN ENGLISH, MBA**

Senior Director / Investment & Retail Services  
aenglish@commercialkentucky.com



333 E. MAIN STREET, SUITE 510  
LOUISVILLE, KY 40202  
+1 502 589 5150  
COMMERCIALKENTUCKY.COM

*Independently Owned and Operated / A member of the Cushman & Wakefield Alliance*

# LAND INVESTMENT TEAM



**STEPHAN F. GRAY, SIOR**  
President / Executive Managing Director  
sgray@commercialkentucky.com



**ROBERT B. WALKER, SIOR, CCIM**  
Partner / Executive Managing Director  
rwalker@commercialkentucky.com



**JAKE F. MILLS, SIOR**  
Senior Director  
jmills@commercialkentucky.com



**GREG P. CHARMOLI**  
Executive Director  
gcharmoli@commercialkentucky.com



333 E. MAIN STREET, SUITE 510  
LOUISVILLE, KY 40202  
+1 502 589 5150  
[COMMERCIALKENTUCKY.COM](http://COMMERCIALKENTUCKY.COM)

*Independently Owned and Operated / A member of the Cushman & Wakefield Alliance*